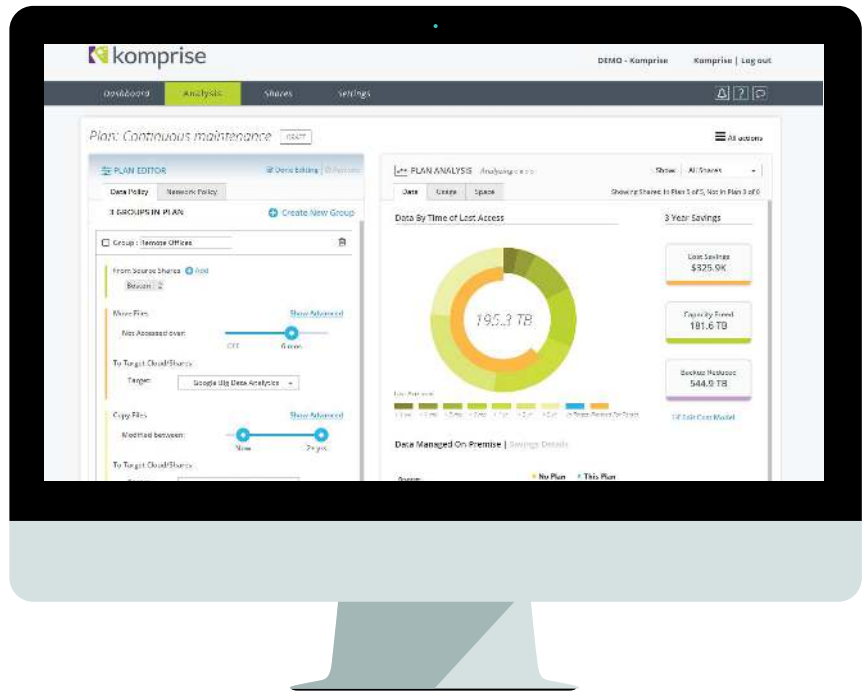


Manage Data Growth Without Disruption

Komprise Data Management and EMC Isilon, ECS

As unstructured data continues to grow exponentially, IT organizations need to efficiently scale storage capacity and data management across both on-premise and cloud storage. Scale-out storage such as EMC Isilon and ECS help businesses do more with less - how can you seamlessly leverage these without costly and complex migrations or user disruption?

Komprise data-aware management analyzes data usage and growth across your storage and adaptively moves and manages data to meet your performance, capacity and cost objectives.



Deploy in 15 minutes. No hardware, no new storage. Simply download the Komprise software and point it at your storage.



Manage storage sprawl. Analyze data usage and growth across storage. Transparently move data without any changes to user access.



Sub-cloud pricing delivers 70%+ cost savings on every terabyte you manage.

Data-aware management for the cloud era

“ *Komprise frees us to efficiently manage data and cut over 70% of costs – without users having to worry about where the data is located.* ”
– *Dir IT Healthcare*

GET INSIGHTS INTO YOUR DATA

In minutes, delivers insights into how data is growing and being used across all your storage. Automates management with data-awareness.

NO IMPACT TO PRIMARY DATA I/O PATH

Sits outside the active data path so access to hot data is unchanged.

EXTEND YOUR EXISTING STORAGE

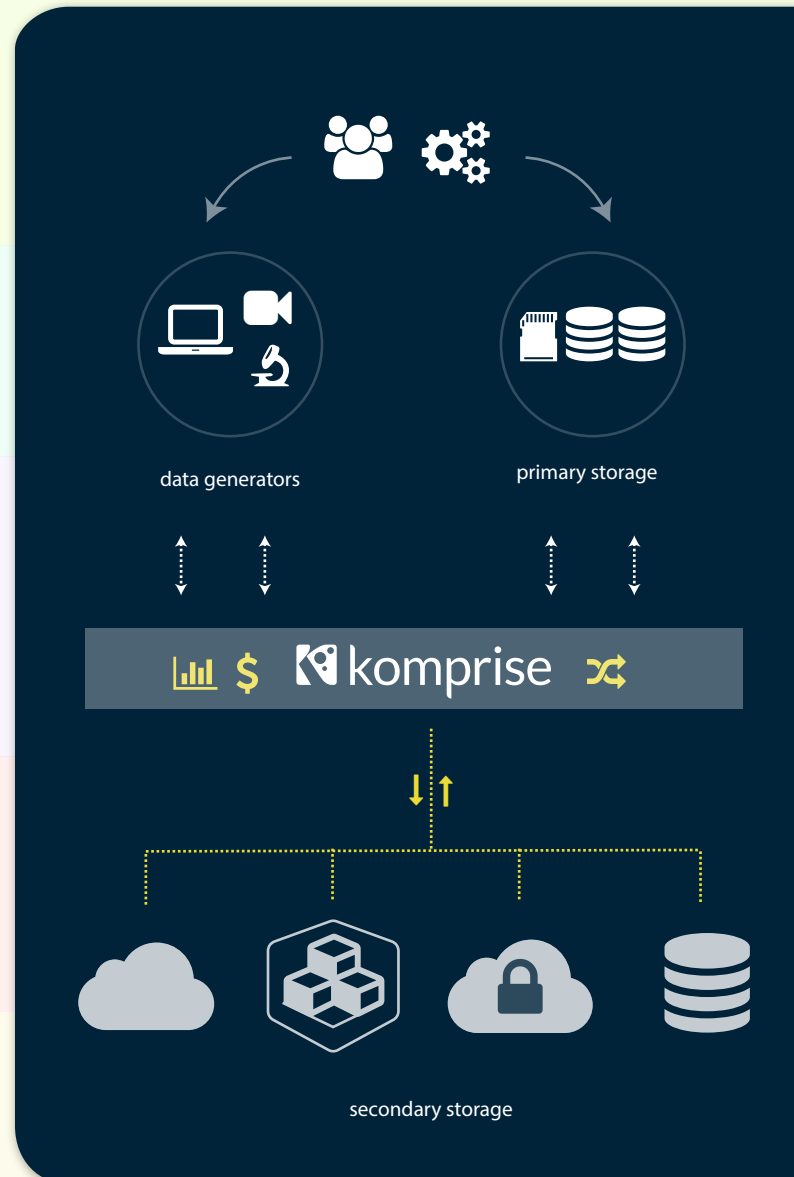
Transparently extends your existing primary storage with secondary targets of your choice (Object, Cloud, or NAS) – including EMC Isilon and ECS. Provides NAS interface to object and cloud.

NO CHANGES TO USERS OR APPLICATIONS

Users and applications continue to see and access the moved files from their primary storage as before with no change.

DELIVER IMMEDIATE ROI

Sub-cloud pricing instantly saves ~70%+ on every terabyte managed.



“Top 10 Coolest Storage Startups of 2015”

